



Ships Particulars

(Details are believed to be correct, but are not guaranteed.)

IMO number/Flag/Build:

- OXL Avatar: 9357999/Antigua and Barbuda/2005
- HHL Nile: 9443669/Gibraltar/2009

Tonnage:

- DWT (without tweendeck): about 12.744 mt
- Weight of tweendeck pontoons: about 396 mt
- GT/NT: 9.611/4.260
- Suez/Panama GT/NT: 7.749/8.427

Type:

- Heavy lift Multipurpose Dry Cargo Vessel
- Strengthened for heavy cargoes
- Equip. for carriage of containers
- Tweendeck can be used as bulkhead in holds

Dimensions:

- LOA: 138,07 m
- LBP: 130,00 m
- Breadth mld.: 21,00 m
- Draft Summer SW: 8,00 m
- Air draft: 39,40 m to keel

Holds:

- Number of holds: 3
- Hold form: double skinned/boxshaped
- Hold 1&3 narrow stepwise in container dimensions

Capacity:

- Grain/Bale
- Hold no.1: 2.701 m³
- Hold no.2: 8.362 m³
- Hold no.3: 4.890 m³
- Total: 15.953 m³

Heights:

- Tanktop – Hatchcover Hold no.1: 10,53 m
- Tanktop – Hatchcover Hold no.2: 11,18 m
- Tanktop – Hatchcover Hold no.3: 10,77 m
- Tanktop – Tweendeck (bottom edge) Hold 1: 5,43 m
- Tanktop – Tweendeck (bottom edge) Hold 2: 3,25 /6,00/7,45 m
- Tanktop – Tweendeck (bottom edge) Hold 3: 5,59 m
- Tweendeck (top edge) - Hatchcover Hold1: 4,50 m
- Tweendeck (top edge) - Hatchcover Hold2: 2,93/4,38/7,13 m
- Tweendeck (top edge) - Hatchcover Hold3: 4,38 m

Hatch:

- Hold no.1: 19,30 x 15,42 m , 4 pontoons
- Hold no.2: 42,33 x 17,98 m, 8 pontoons
- Hold no.3: 26,00 x 17,98 m, 2 pontoons
- Hydraulic folding type hatch covers

Hold equipment:

- Vessel is electric ventilated in all holds, all cargo holds are CO₂ fitted
- Hold no.1: 6 air changes per hour
- Hold no.2+3: 12 air changes per hour

Cranes

- OXL Avatar: SWL 120 ts, 2 x120 mt SWL El.-Hydr. Cranes NMF, combinable up to 240 SWL
- HHL Nile: SWL 180 ts, 2 x180 mt SWL El.-Hydr. Cranes NMF, combinable up to 360 SWL
- Max hoisting height (way of hook) about 42 meter
- Slewing range of both cranes 360 degrees
- Slewing speed: 0.70 rpm

Machinery/Propeller

- MAK 6M43, output 5.400 kW
- Controllable pitch propeller with 132 rpm

Generators/Bowthruster:

- 1 shaft generator, 750 kW
- 3 generators of 395 kW
- 1 emergency generator of 99 kW
- 500 kW Bowthruster

Speed / Consumption:

- About 15 Knots on 25 mt IFO 380cst/day at 90% MCR
- Port consumption idle: 1,4 mt MGO
- Port consumption gear working: 2,5 mt MGO

Tank capacity:

- Heavy fuel oil (HFO): 948 m³
- Diesel oil (MGO): 150 m³
- Ballast water: 5.000 m³
- Fresh Water: 128 m³ + 18,9 m³

Container capacity:

- 665 teus, without tweendeck pontoons on board

M/V OXL AVATAR M/V HHL NILE

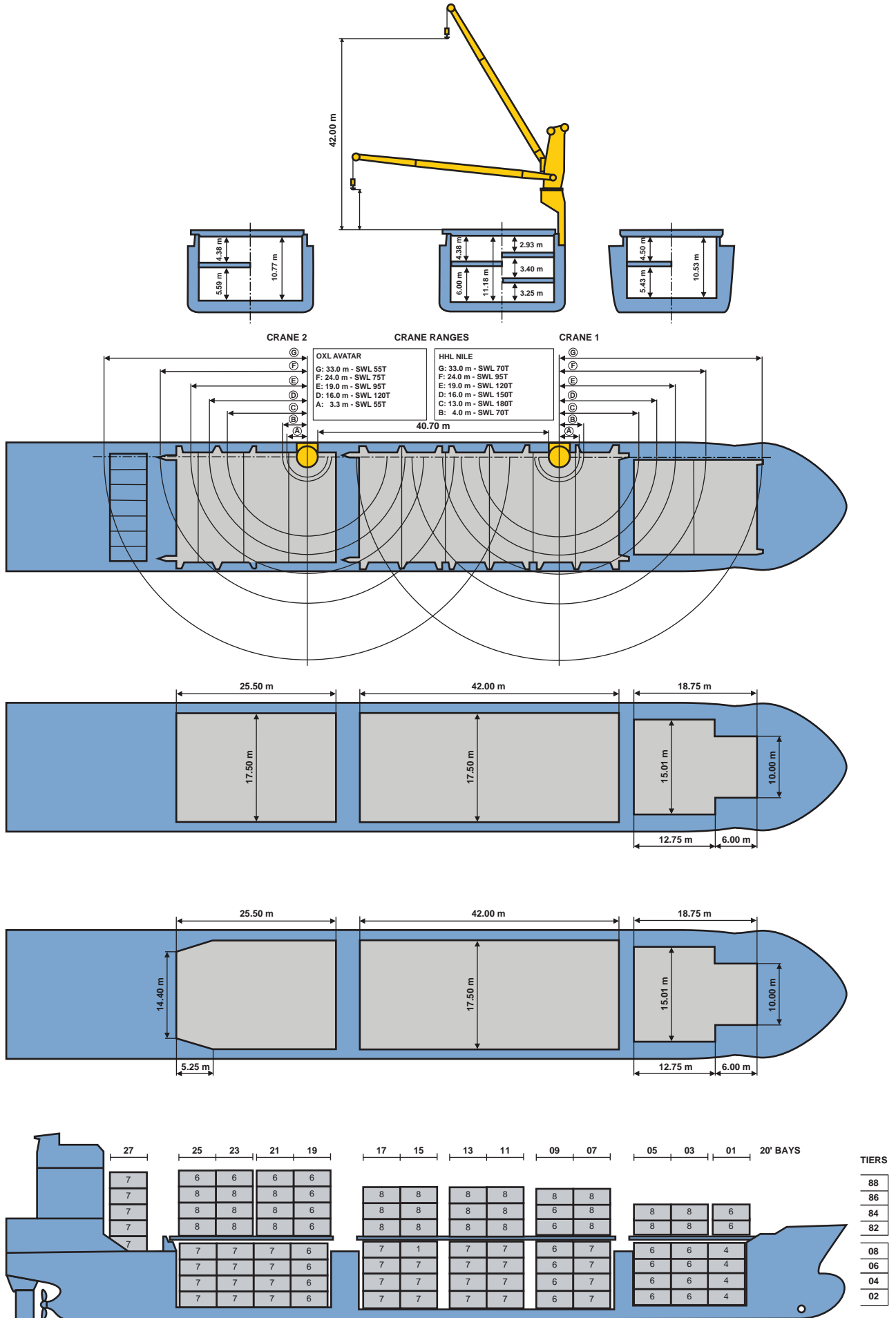
COMBINED LIFTING CAPACITY: HHL NILE: 360T
OXL AVATAR: 240T

DECK

TWEEN DECK

LOWER HOLD

665 TEUS



++++ Details believed to be correct, but are given without guarantee +++++