



Ships Particulars

(Details are believed to be correct, but are not guaranteed.)

IMO number/Flag/Build:

- OXL Lotus: 9144471 / Germany /1997
- OXL Oceanic: 9144469/ Isle of Man /1997

Builders:

- Peene Werft, Wolgast, Germany

Type:

- RO/RO - LO/LO MPP Carrier

Tonnage:

- Deadweight abt 5.100 TDW on 6.62 m draft
- 5.760 GT
- 2.579 NT

Cargo capacity:

- Bale: 340.000 CBFT

Dimensions:

- Length o.a.: 100,90 m
- L.B.P.: 94,60 m
- Breadth: 18,60 m
- Depth to main deck: 9,70 m
- Depth to RO/RO deck: 7,05 m
- Draft: 6,62 m

Classification:

- GL +100 A5 'E1' RO/RO vessel + MC 'E1' AUT
- Equipped for carriage of containers
- Equipped for carriage of dangerous goods
- Solas II Reg. 54.3 Class 3, 4, 5.1, 6.1 and 8
- Ice class: E 1
- Lakes fitted: yes

Container capacity:

- In hold 210 TEU equiv.: 96 FEU + 17 TEU
- On deck 291 TEU equiv.: 133 FEU + 26 TEU
- Total 501 TEU equiv.: 299 FEU + 43 TEU
- 40 Reefer plugs included.
- VSL not fully fitted!

HO / HA / Deck dims:

- 1 HO/HA
- Weather deck: 70,20 x 15,60 m
- Tween deck: 37,88 x 14,85 m
- Length RO/RO deck: 80,00 m
- 6 weather deck pontoons with following dimensions:
- pontoon 1,3-6: 12,50m x 15,15m
- pontoon 2: 6,60m x 15,15m

Clear height:

- RO/RO deck: 5,56 m
- Lower hold: 4,65 m
- Without tween deck: 11,20 m
- Length meters: 400 LM RO/RO deck / 170 LM lower hold

Cranes:

- 2 Cranes portside mounted
- SWL 100,00 MTS at 18,00 m outreach
- Combinable to 200,00 MTS
- SWL 60,00 MTS at 28,00 m outreach
- Max lifting height above hatch-coaming at 100 MTS SWL
- From 22,30 m at 18 m outreach to 26,52 m at 5,5 m outreach.

Stern ramp:

- Stern ramp capacity: 350,00 MTS
- Stern door opening: 10 x 5,60 m

Spreading beam:

- Vsl fitted with a suitable spreader bar and slings and heavy lift shackles for lifting tandem lifts up to weight of 200 MTS less weight of spreader bar/slings/shackles.

Main engines:

- Main engine: 5280 KW
- Bow thrusters: 550 KW

Speed / Cons. / Fuel:

- Abt 14,5 Kn on abt 20 MTS IFO 180 RME 25
- Abt 1,5 MTS GO idle/2,5 MTS GO cranes working.
- Speed is basis BFT 2 conditions including shaft generator but no reefer cont connected.

H+M value:

- EUR 12.300.000,00

Co2:

- Vsl is Co2 fitted there are NO sprinklers in the hold.

Ventilation:

- Mechanical ventilation at sea:
- 20 air changes per hour on tween deck
- 6 air changes per hour at the lower hold

Max permitted point-pressures as well as max stack weights per 20' resp. 40' stack:

- on tank top: 10,00 tons per m2
- on tween deck/ roro cover: 3,50 tons per m2
- in area 3,0m off from hatch cover RO/RO deck: 8 tons per m2
- on weather deck: 1,75 tons per m2
- on hatch cover: 1,3,4 and 6: 2,5 tons per m2 (max 510 tons/cover)
- on hatch cover 2: 2,35 tons per m2 (max 250 tons/cover)
- on hatch cover 5: 2,35 tons per m2 (max 480 tons/cover)

Container stack weights:

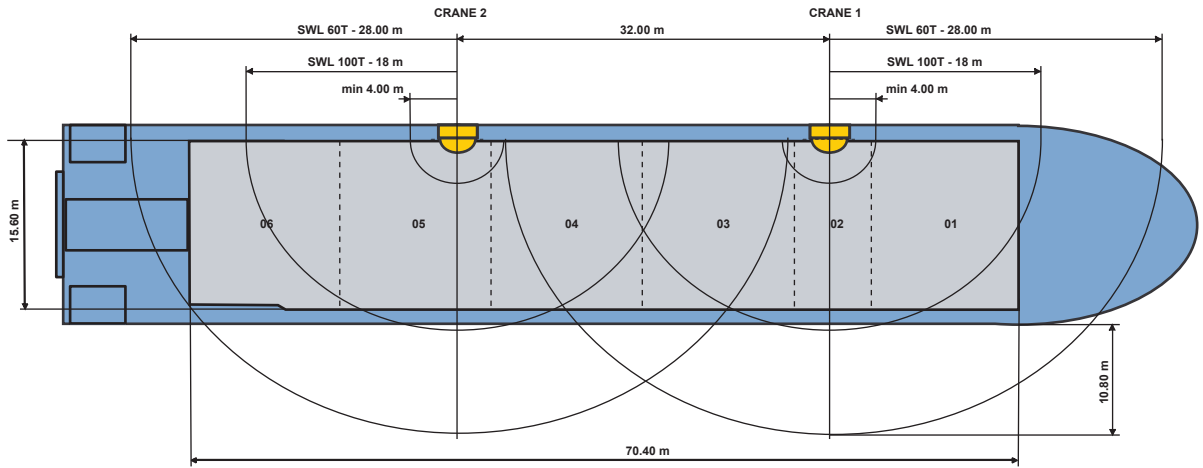
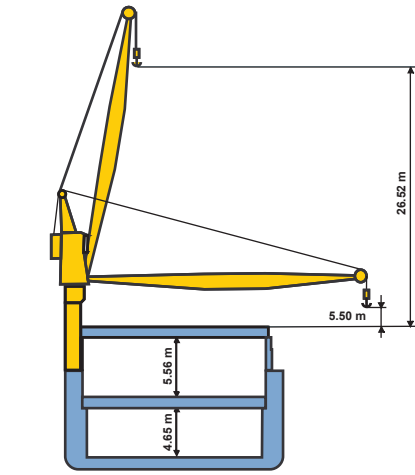
- on tank top: 20'- 96 tons/ 40'- 125 tons
- on tween deck: 20'- 50 tons/ 40'- 65 tons
- on weather deck:
- row 00-04 (inside): 20'- 45 tons/ 40'- 60 tons
- row 05&06 (outside): 20'- 60 tons/ 40'- 70 tons

OXL n.v.

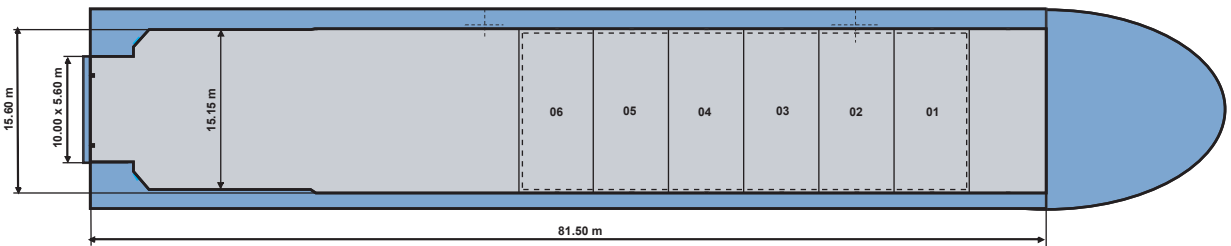
M/V OXL LOTUS M/V OXL OCEANIC

200T COMBINED LIFTING CAPACITY

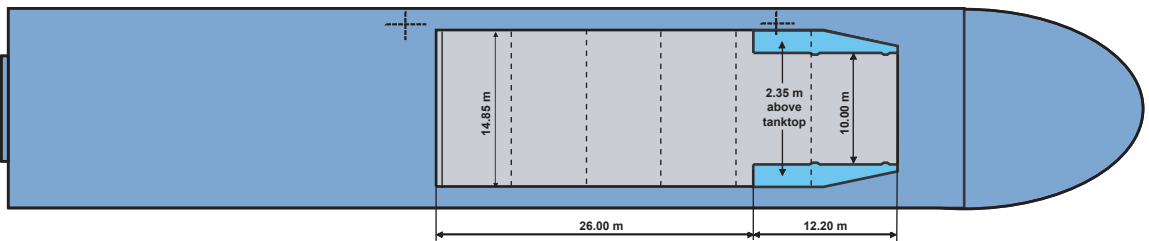
DECK



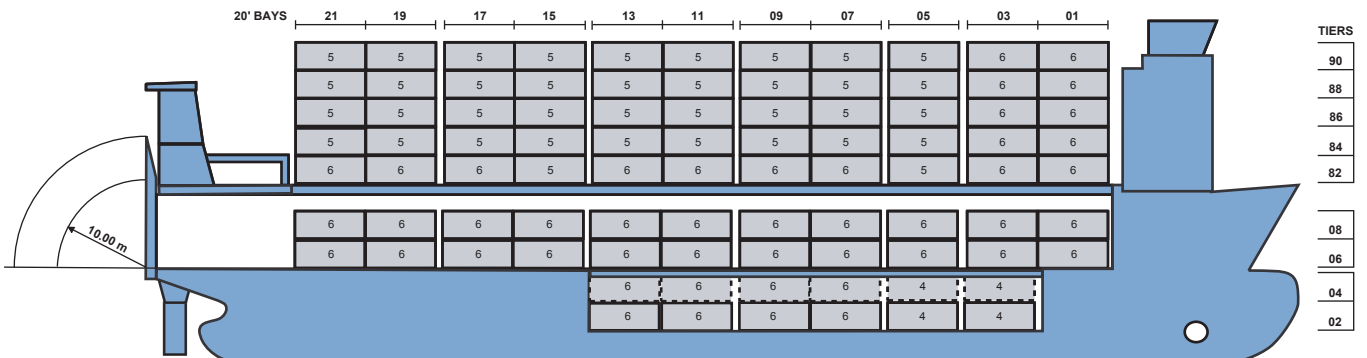
TWEEN DECK



LOWER HOLD



501 TEUS



++++ Details believed to be correct, but are given without guarantee +++++