



Ships Particulars

(Details are believed to be correct, but are not guaranteed.)

IMO number/Flag/Build:

– KEITUM: 9214604/ Antigua and Barbuda/2001

Tonnage:

– DWT (without tweendeck): about 11.900 mt
 – Weight of tweendeck pontoons: about 272 mt
 – GT/NT: 8861/4238
 – Suez/Panama GT/NT: 8854/8095

Type:

– Dry cargo Mpp/Container vessel
 – Flush removal T/D in hold no. 2
 – Equip. for carriage of containers

Dimensions:

– LOA: 134,15 m
 – Lpp: 126,25 m
 – Beam: 20,40 m
 – Draft Summer SW: 8,38 m
 – Air draft: 35,10 m

Holds:

– 3 box-shaped double skinned cargo holds
 – Hold 1&3 narrow stepwise in container dimensions
 – Steel floored tanktop with flush container shoes
 – Fitted with 8 steel tweendeck pontoons for hold no.2
 – Hold no.2 can be divided into 4 grain compartments by vertically fitting the 8 tweendeck pontoons
 Flush removable tweendeck in hold 2

Capacity:

– Grain/Bale
 Hold no.1: 3120 m³
 Hold no.2: 9255 m³
 Hold no.3: 2326 m³
 Total: 14701 m³

Heights:

– Lower hold – Hatch cover: 11,75 m
 – Lower hold – Tweendeck (pos1): 6,00 m
 – Tweendeck (pos1) – Hatch cover: 5,15 m
 – Lower Hold – Tweendeck (pos2): 8,00 m
 – Tweendeck (pos2) – Hatch cover: 3,15 m

Hatch:

– Hold no.1: 26,40 x 15,30/10,20 m , 4 pontoons
 – Hold no.2: 52,00 x 15,30, 8 pontoons
 – Hold no.3: 13,60 x 15,30 m, 2 pontoons
 – MacGregor non-sequential pontoon hatch cover

Hold equipment:

– 20/25 air changes per hour (based on empty holds)
 – CO₂ fitted in all 3 cargo holds
 – Suitable for IMO cargoes
 – Cargo light fitted in all 3 cargo holds

Cranes (SWL 150 ts)

– 2 Liebherr electrohydraulic cranes mounted in port side combinable up to 300 mt SWL subject to dimensions and hook points of unit to be handled
 – Standard rigging of the cranes is 40 mt
 – Jib height 34,0 m
 – Cranes fitted with 80 mt and 150 mt heavy lift brackets
 – Slewing speed: 0,75 rpm

Machinery/Propeller

– Wartsila 8L46B, 7800 kW / 500 rpm with gear (145,6 rpm)
 – Controllable pitch propeller

Generators/Bowthruster:

– 1 shaft generator, 900 kW
 – 3 generators of 569 kW
 – 1 emergency generator of 100 kW
 – 700 kW Bow thruster

Speed / Consumption:

– About 16,5 Knots on 29 mt IFO 380csst
 – Port consumption idle: 1,7 mt MGO
 – Port consumption gear working: 4,4 mt MGO

Tank capacity:

– Heavy fuel oil (IFO): 1006,9 m³
 – Diesel oil (MGO): 143,2 m³
 – Ballast water: 4483,6 m³
 – Fresh Water: 77,3 m³

Reefer plugs:

– 24 reefer plugs in hold
 – 104 reefer plugs on deck

Container capacity:

– 903 teus, without tweendeck pontoons on board

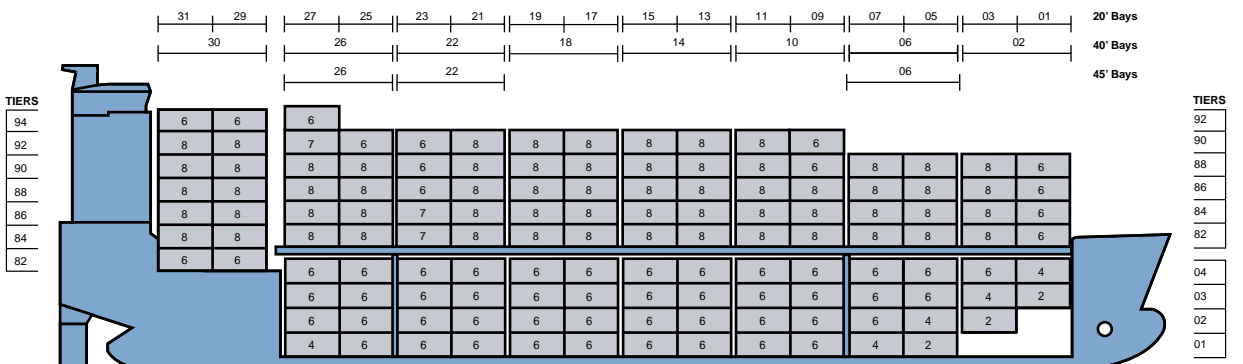
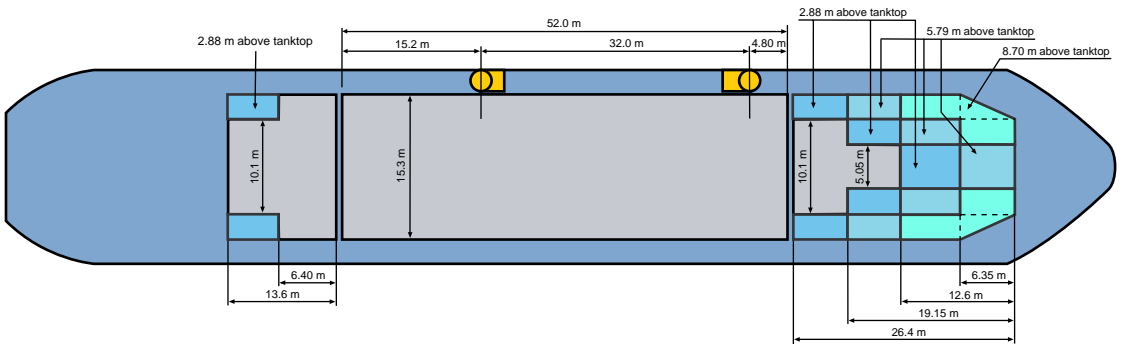
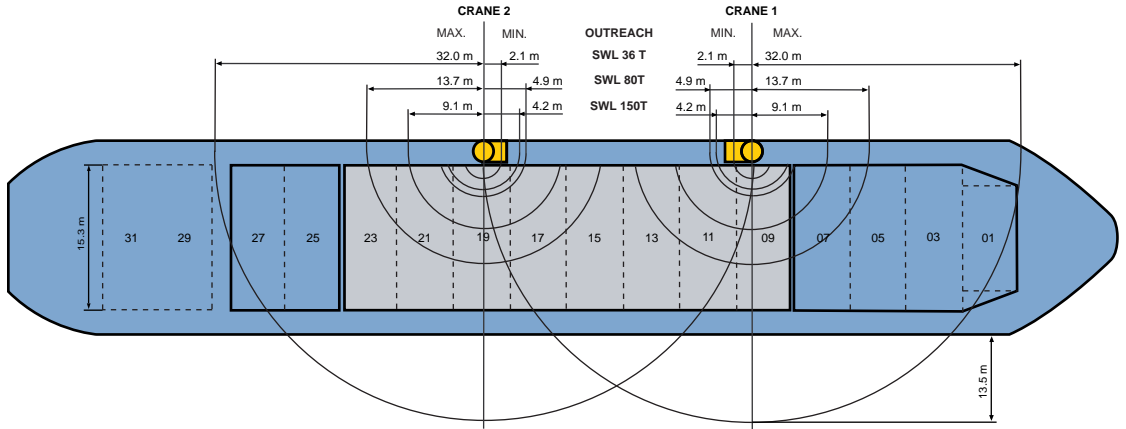
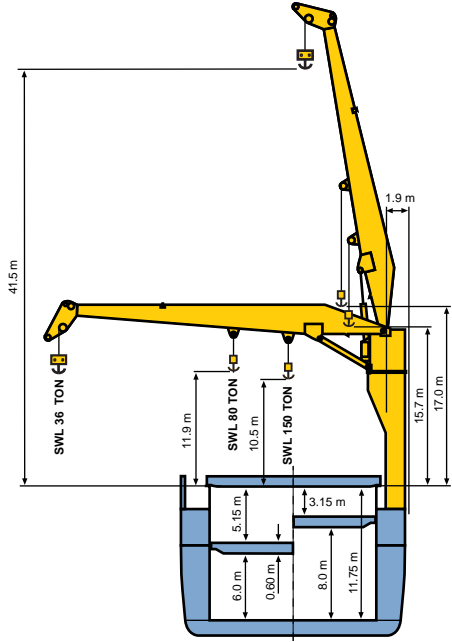
M/V KEITUM

300MT COMBINED LIFTING CAPACITY

TWEEN DECK

LOWER HOLD

903 TEUS



++++ Details believed to be correct, but are given without guarantee +++++