



## Ships Particulars

(Details are believed to be correct, but are not guaranteed.)

### IMO number/Flag/Build:

– HR Recognition: 9277280/Liberia/2005

### Tonnage:

– DWT (without tweendeck): about 10.536 mt  
 – Weight of tweendeck: about 445 mt  
 – Weight of hatch cover pontoons: about 412 mt  
 – GT/NT: 8.963/4.522  
 – Suez/Panama GT: 7.977/7.854

### Type:

– Heavy lift Multipurpose Dry Cargo Vessel  
 – Strengthened for heavy cargoes  
 – Equip. for carriage of containers  
 – Tweendeck can be used as bulkhead in holds

### Dimensions:

– LOA: 134,65 m  
 – LBP: 125,60 m  
 – Breadth mld.: 21,50 m  
 – Draft Summer SW: 7,955 m  
 – Air draft: 40,80 m to keel

### Holds:

– Number of holds: 2  
 – Hold form: double skinned/boxshaped  
 – narrow stepwise in container dimensions

### Capacity:

– Grain/Bale  
 Hold no.1 (excl. twd): 3.493 m<sup>3</sup>  
 Hold no.2 (excl. twd): 11.458 m<sup>3</sup>  
 Total (excl. twd): 14.951 m<sup>3</sup>

### Heights:

– Tanktop – Hatchcover: 11,89 m  
 – Tanktop – Hatchcover Hold no.2: 11,18 m  
 – Tanktop – Tweendeck (bottom edge) Hold 1: 5,18 m  
 – Tanktop – Tweendeck (bottom edge) Hold 2: 4.68 m/ 8,47 m  
 – Tweendeck (top edge) - Hatchcover Hold1: 6,09 m  
 – Tweendeck (top edge) - Hatchcover Hold2: 2,80 m/ 6,59 m

### Hatch:

– Hold no.1: 20,25 m x 13,00/7,80/2,60 m  
 – Hold no.2: 58,50 m x 16,90/5,20 m  
 – Hydraulic folding type hatch covers, combinable w/pontoons

### Hold equipment:

– all holds are CO<sub>2</sub> fitted  
 – 6 air changes per hour

### Cranes

– 2x250 mt SWL El.-Hydr. Cranes NMF, combinable up to 500 mt SWL  
 – Beam of 460 mt SWL (44 mt on board)

### Machinery/Propeller

– MAK 8M43, output 7.200 kW

### Generators/Bowthruster:

– 1 shaft generator, 750 kVA  
 – 2 diesel generators of 371 kW  
 – 1 emergency generator of 371 kW/438 kVA  
 – 650 kW Bowthruster

### Speed / Consumption:

– About 17 Knots on 29 mt IFO 380cst/day at 90% MCR  
 – Port consumption idle: 1,3 mt MGO  
 – Port consumption gear working: 2,3 mt MGO

### Tank capacity:

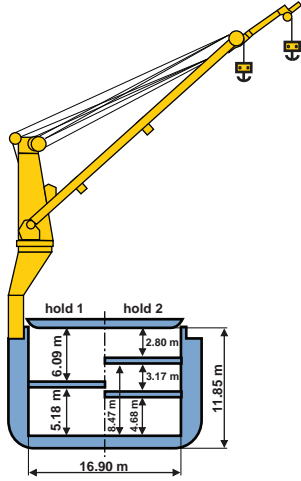
– Heavy fuel oil (HFO): 720 m<sup>3</sup>  
 – Diesel oil (MGO): 116 m<sup>3</sup>  
 – Ballast water: 5.956 m<sup>3</sup>  
 – Fresh Water: 78 m<sup>3</sup>

### Container capacity:

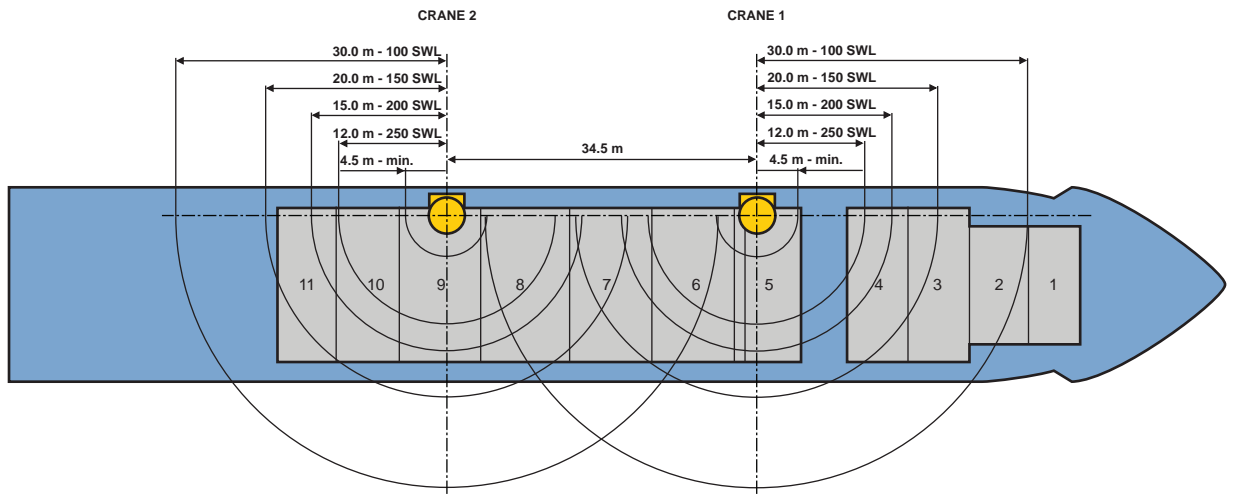
– 547 teus, without tweendeck pontoons on board

# M/V HR RECOGNITION

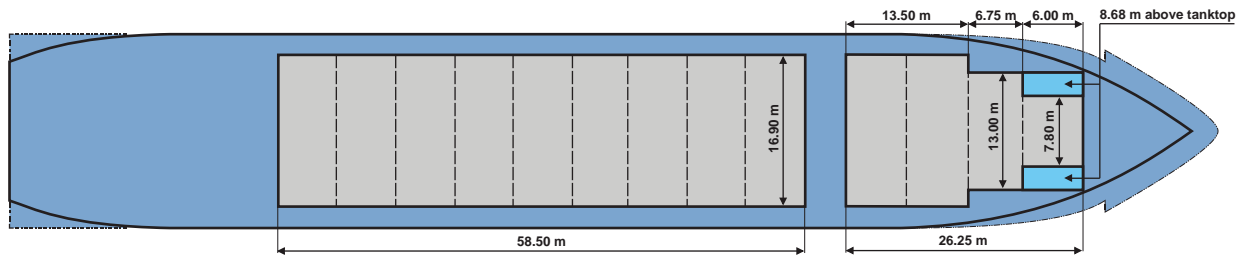
500T COMBINED LIFTING CAPACITY



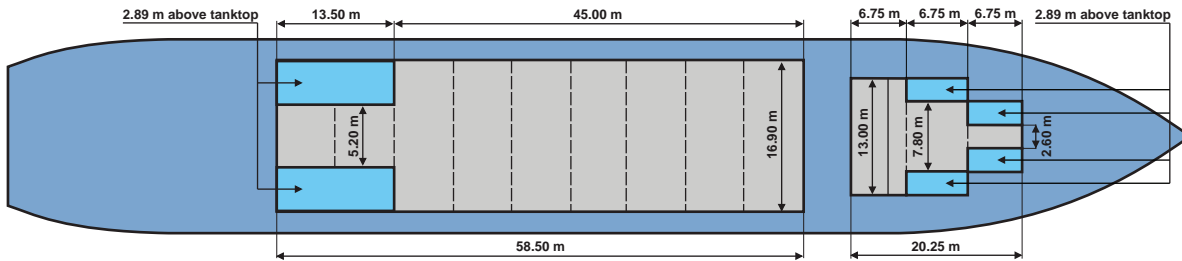
DECK



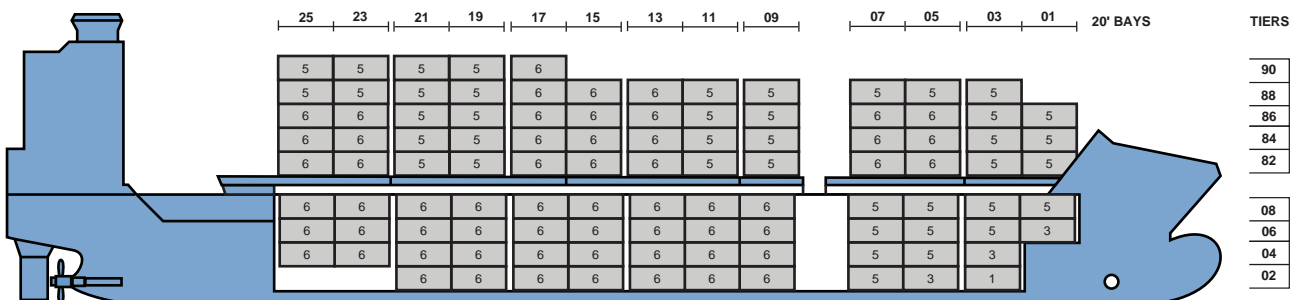
TWEEN DECK



LOWER HOLD



569 TEUS



+++ Details believed to be correct, but are given without guarantee +++