



Ships Particulars

(Details are believed to be correct, but are not guaranteed.)

IMO number/Flag/Build:

- HR Intonation: 9214551/Antigua & Barbuda/2000
- HR Indication: 9214563/Antigua & Barbuda/2000

Tonnage:

- DWT (without tweendeck): about 13.426 mt
- Weight of tweendeck: about 664 mt
- GT/NT: 11.130/5.125
- Suez/Panama GT: 8.979/9.372

Type:

- Heavy lift Multipurpose Dry Cargo Vessel
- Fully P & I covered: skuld
- Equip. for carriage of containers

Dimensions:

- LOA: 162,15 m
- LBP: 154,25 m
- Breadth mld.: 20,40 m
- Draft Summer SW: 7,88 m
- Air draft: 43,44 m to keel

Holds:

- Number of holds: 3
- Hold form: Ho.2: double skinned/boxshaped
Ho.1+3: narrow stepwise in container dimensions
- Tweendeck hold no.2: 80,00 m x 15,30 m
- Lower hold no.1: 13,60 m x 10,17 m/5,13 m
- Lower hold no.2: 80,00 m x 15,30 m
- Lower hold no.3: 13,60 m x 15,30 m/10,17 m

Capacity:

- Grain/Bale
- Hold no.1 (excl. twd): 3.120 m³
- Hold no.2 (excl. twd): 14.238 m³
- Hold no.3 (excl. twd): 2.2326 m³
- Total (excl. twd): 19.684 m³

Heights:

- Tanktop – Hatchcover Hold 1-3: 11,75 m
- Tanktop – Tweendeck (bottom edge) Hold 2: 4,98 m/6,08 m/8,08 m
- Tweendeck (top edge) - Hatchcover Hold2: 6,14 m/5,04 m/3,04 m

Hatch:

- Hatch no.1: 26,80 m x 15,70/10,57 m
- Hatch no.2: 80,40 m x 15,70 m
- Hatch no.3: 14,00 m x 15,70 m
- 18 pontoons, Lift away type

Hold equipment:

- all holds are CO₂ fitted

Cranes

- 2x350 mt SWL El.-Hydr. Cranes NMF, combinable up to 700 mt SWL
- 1x150 mt SWL El.-Hydr. Crane NMF

Machinery/Propeller

- WÄRTSILÄ 8L46B, output 7.800 kW

Generators/Bowthruster:

- 1 shaft generator, 900 kW
- 3 diesel generators driven 569 kW
- 1 emergency generator of 100 kW
- 700 kW Bowthruster
- Rudder: Ulstein Hinze type flap rudder

Speed / Consumption:

- About 17 Knots on 29 mt IFO 380cst/day at 90% MCR
- Port consumption idle: 1,7 mt MGO
- Port consumption gear working: 3,5 mt MGO

Tank capacity:

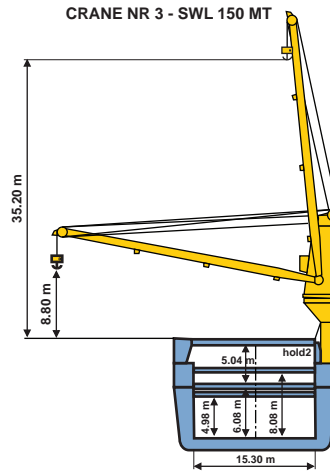
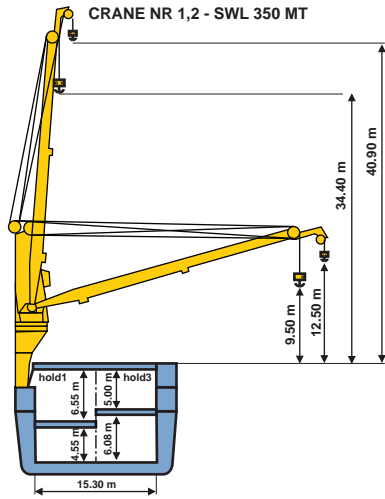
- Heavy fuel oil (HFO): 1006,9 m³
- Diesel oil (MGO): 143,2 m³
- Ballast water: 6.016,4 m³
- Fresh Water: 77,2 m³

Container capacity:

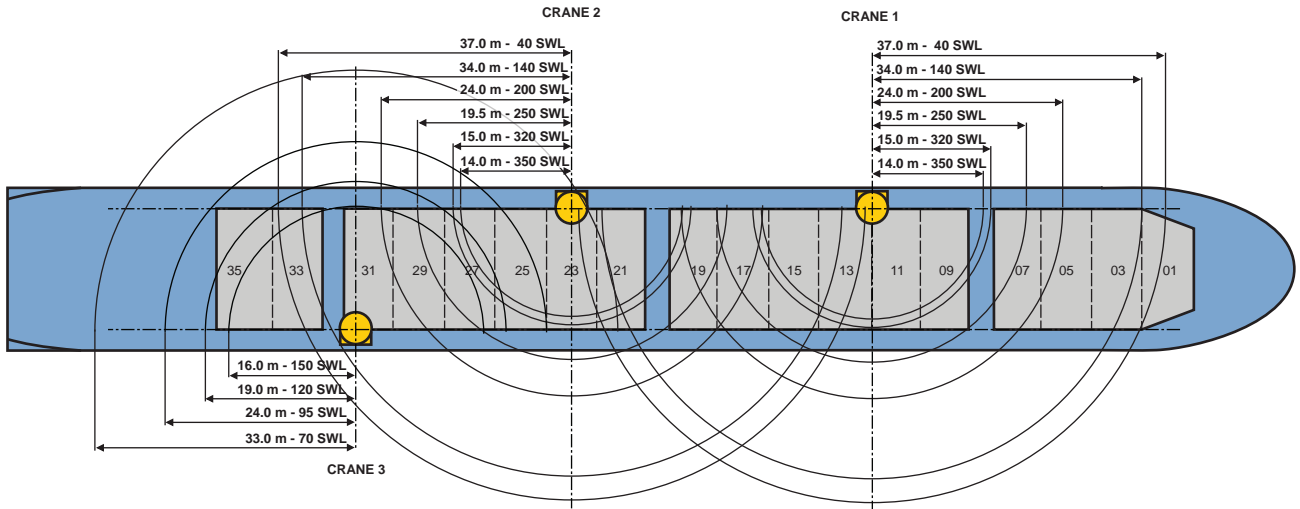
- 1070 TEU or 504 FEU+20 TEU, without tweendeck pontoons on board
- Reefer plugs: 128

M/V HR INTONATION M/V HR INDICATION

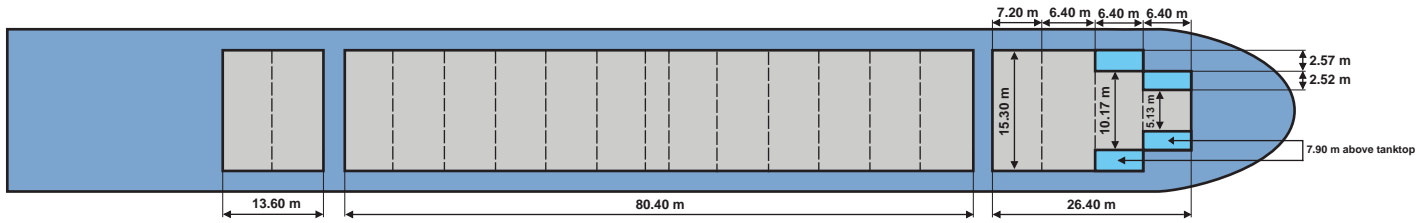
700T COMBINED LIFTING CAPACITY



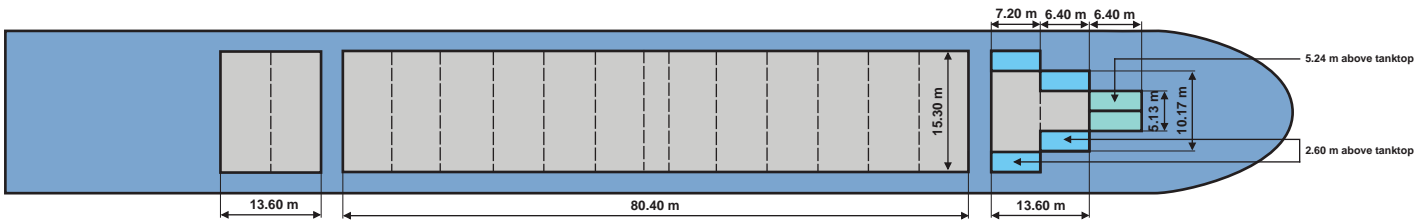
DECK



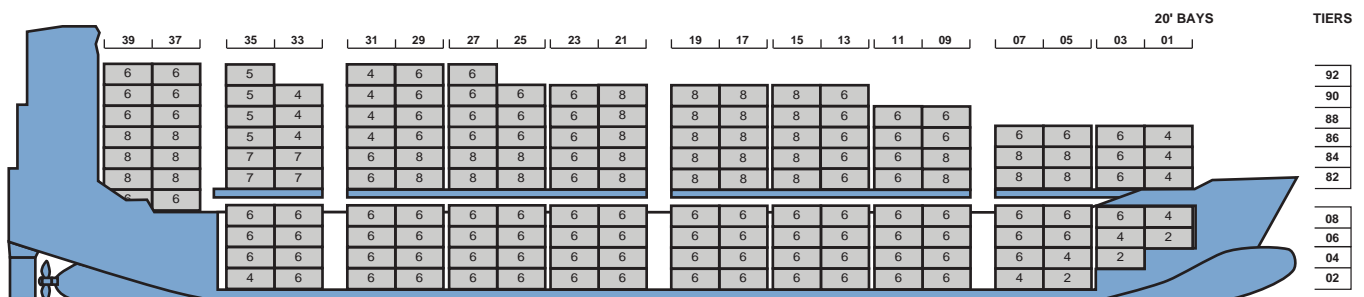
TWEEN DECK



LOWER HOLD



1070 TEUS



+++ Details believed to be correct, but are given without guarantee +++