



## Ships Particulars

(Details are believed to be correct, but are not guaranteed.)

### IMO number/Flag/Build:

– HR Intonation: 9214551/Antigua & Barbuda/2000

### Tonnage:

– DWT (without tweendeck): about 13.426 mt  
 – Weight of tweendeck: about 664 mt  
 – GT/NT: 11.130/5.125  
 – Suez/Panama GT: 8.979/9.372

### Type:

– Heavy lift Multipurpose Dry Cargo Vessel  
 – Fully P & I covered: skuld  
 – Equip. for carriage of containers

### Dimensions:

– LOA: 162,15 m  
 – LBP: 154,25 m  
 – Breadth mld.: 20,40 m  
 – Draft Summer SW: 7,88 m  
 – Air draft: 43,44 m to keel

### Holds:

– Number of holds: 3  
 – Hold form: Ho.2: double skinned/boxshaped  
 Ho.1+3: narrow stepwise in container dimensions  
 – Tweendeck hold no.2: 80,00 m x 15,30 m  
 – Lower hold no.1: 13,60 m x 10,17 m/5,13 m  
 – Lower hold no.2: 80,00 m x 15,30 m  
 – Lower hold no.3: 13,60 m x 15,30 m/10,17 m

### Capacity:

– Grain/Bale  
 Hold no.1 (excl. twd): 3.120 m<sup>3</sup>  
 Hold no.2 (excl. twd): 14.238 m<sup>3</sup>  
 Hold no.3 (excl. twd): 2.2326 m<sup>3</sup>  
 Total (excl. twd): 19.684 m<sup>3</sup>

### Heights:

– Tanktop – Hatchcover Hold 1-3: 11,75 m  
 – Tanktop – Tweendeck (bottom edge) Hold 2: 4,98 m/6,08 m/8,08 m  
 – Tweendeck (top edge) - Hatchcover Hold2: 6,14 m/5,04 m/3,04 m

### Hatch:

– Hatch no.1: 26,80 m x 15,70/10,57 m  
 – Hatch no.2: 80,40 m x 15,70 m  
 – Hatch no.3: 14,00 m x 15,70 m  
 – 18 pontoons, Lift away type

### Hold equipment:

– all holds are CO<sub>2</sub> fitted

### Cranes

– 2x350 mt SWL El.-Hydr. Cranes NMF, combinable up to 700 mt SWL  
 – 1x150 mt SWL El.-Hydr. Crane NMF

### Machinery/Propeller

– WÄRTSILÄ 8L46B, output 7.800 kW

### Generators/Bowthruster:

– 1 shaft generator, 900 kW  
 – 3 diesel generators driven 569 kW  
 – 1 emergency generator of 100 kW  
 – 700 kW Bowthruster  
 – Rudder: Ulstein Hinze type flap rudder

### Speed / Consumption:

– About 17 Knots on 29 mt IFO 380cst/day at 90% MCR  
 – Port consumption idle: 1,7 mt MGO  
 – Port consumption gear working: 3,5 mt MGO

### Tank capacity:

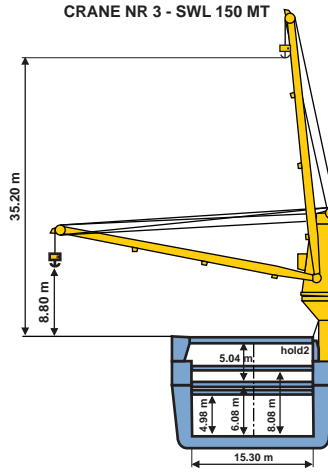
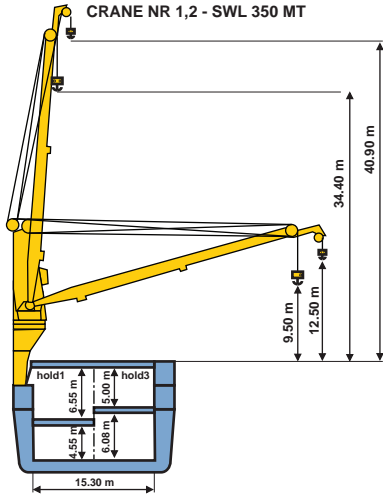
– Heavy fuel oil (HFO): 1006,9 m<sup>3</sup>  
 – Diesel oil (MGO): 143,2 m<sup>3</sup>  
 – Ballast water: 6.016,4 m<sup>3</sup>  
 – Fresh Water: 77,2 m<sup>3</sup>

### Container capacity:

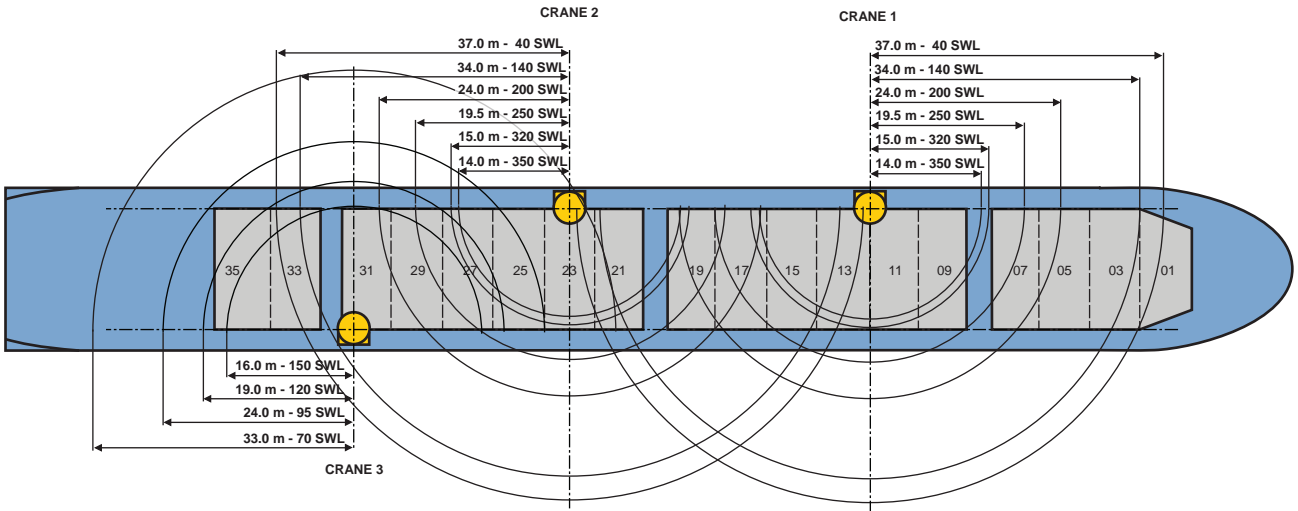
– 1070 TEU or 504 FEU+20 TEU, without tweendeck pontoons on board  
 – Reefer plugs: 128

# M/V HR INTONATION

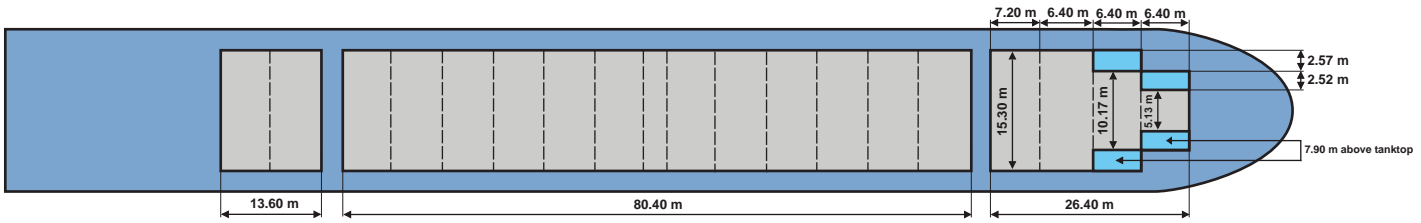
700T COMBINED LIFTING CAPACITY



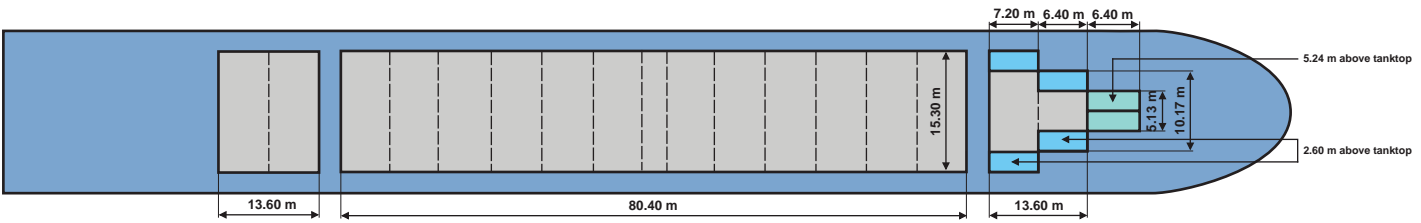
DECK



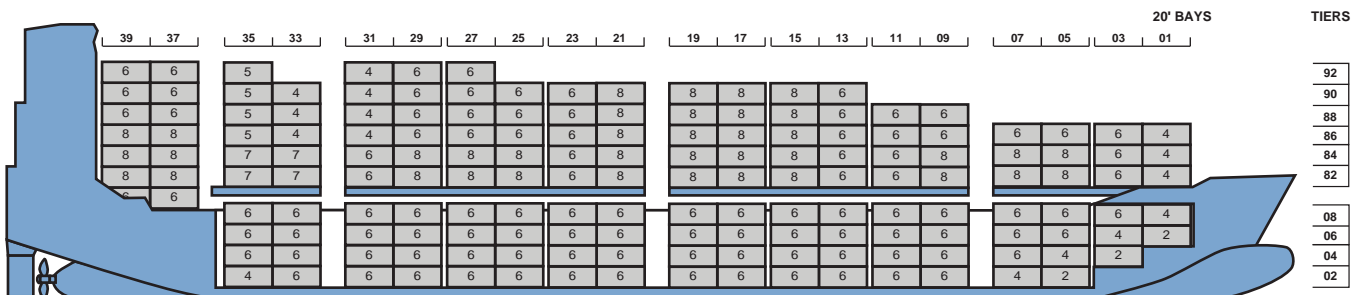
TWEEN DECK



LOWER HOLD



1070 TEUS



++++ Details believed to be correct, but are given without guarantee +++++