



Ships Particulars

(Details are believed to be correct, but are not guaranteed.)

IMO number/Flag/Build:

– SE Pelagica: 9453781/Gibraltar/2010

Tonnage:

– DWT: 12.649 mt
– GR/NT: 9.627/4.261

Type:

– Heavy Lift Multi Purpose Dry Cargo Vessel
– Strengthened for heavy cargoes
– Equipped for the carriage of containers
– Hydraulic hatch covers

Dimensions:

– LOA: 138,50 m
– LPP: 130,71 m
– Beam: 21,00 m
– Draught: 8,00 m SSW

Holds / Hatches:

3 holds – dims:
– Hold 1: 18,75 x 15,02 / 10,06 m
– Hold 2: 42,00 x 17,50 m
– Hold 3: 25,50 x 17,50 m

3 hatches – dims:

– Hatch 1: 18,75 x 15,02 / 10,06 m
– Hatch 2: 42,00 x 17,50 m
– Hatch 3: 25,50 x 17,50 m

Tweendeck: Same dimensions as holds.

No obstructions between hatches, thus making clear deck space up to 104,25 x 17,50 m

Capacity:

– Grain/Bale 15.953 cbm

Tweendeck heights:

– Hold 1: 5,38 / 4,55 m
– Hold 2 – upper level: 3,33 / 7,05 m
– Hold 2 – middle level: 5,95 / 4,43 m
– Hold 2 – lower level: 7,40 / 2,98 m
– Hold 3: 5,54 / 4,43 m

Cranes (SWL 150 ts)

– Two NMF cranes of 150 tonnes SWL located port side
– Cranes able to lift up to 300 mt in combination

Machinery/Propeller

– Caterpilla MAK 6M43 (5400 kW = 7344 HP at 500 RPM)
– Variable pitch controller, left handed, LIPS 4C 13/VL 160-C

Generators/Bowthruster:

– 1 auxiliary generator, 700 kW
– 3 generators of 500 kW each
– Jastram 500 kW (680 HP) Bowthruster

Speed / Consumption:

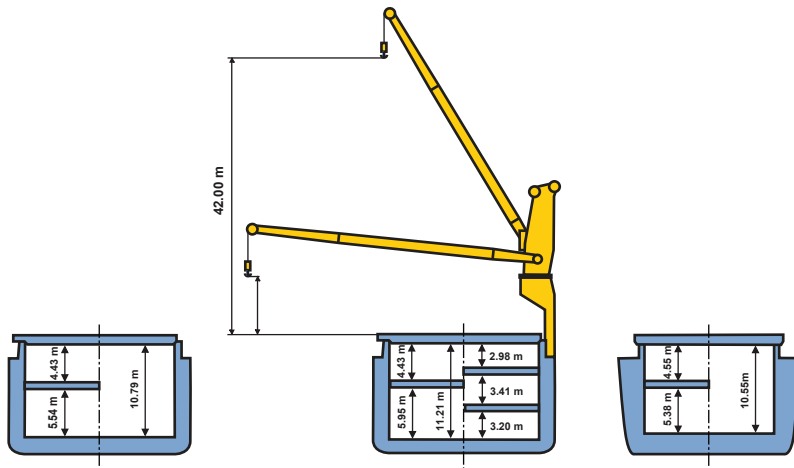
– About 14 knots on about 19 mt IFO 380 cst
– Port consumption idle: 1,5-2,0 mt MGO
– Port consumption gear working: 2,5 -3,0 mt MGO

Container capacity:

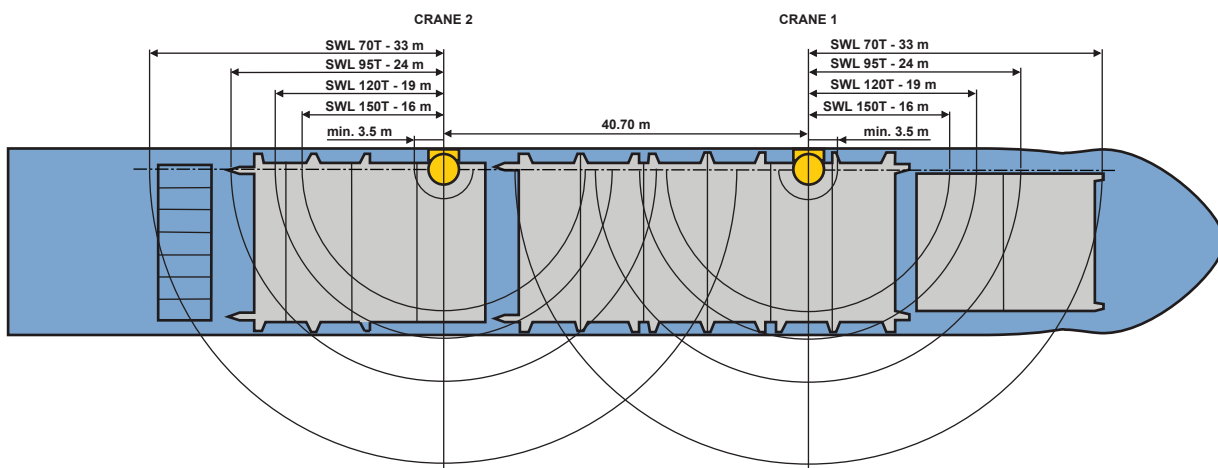
– Containers in holds: 334 TEU
– Containers in deck: 331 TEU
– Containers in total: 665 TEU
(Including 50 reefer containers)

M/V SE PELAGICA

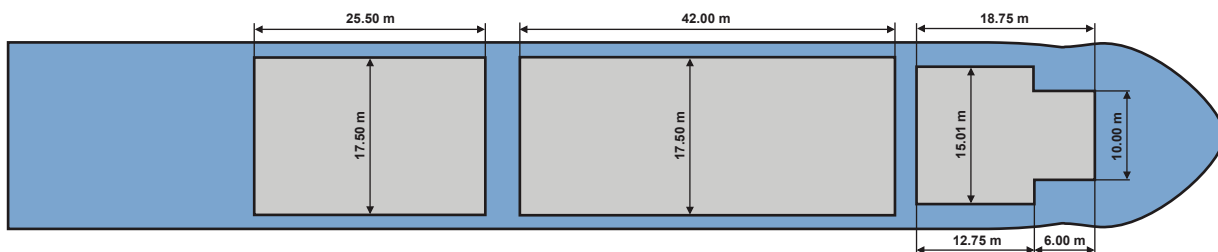
300T COMBINED LIFTING CAPACITY



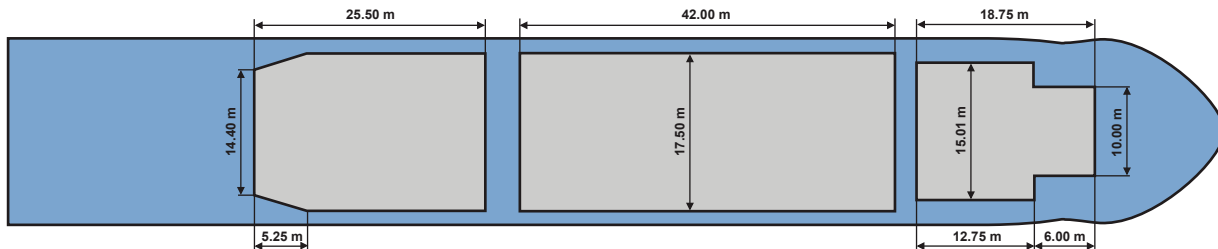
DECK



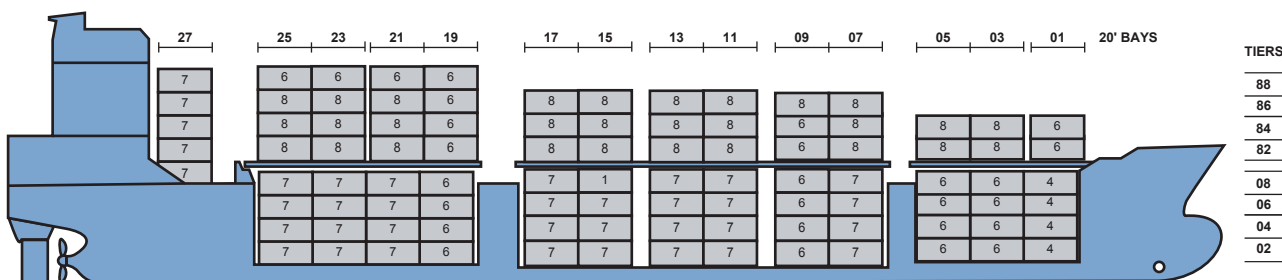
TWEEN DECK



LOWER HOLD



665 TEUS



++++ Details believed to be correct, but are given without guarantee +++++